



ONE FARMS JOURNEY

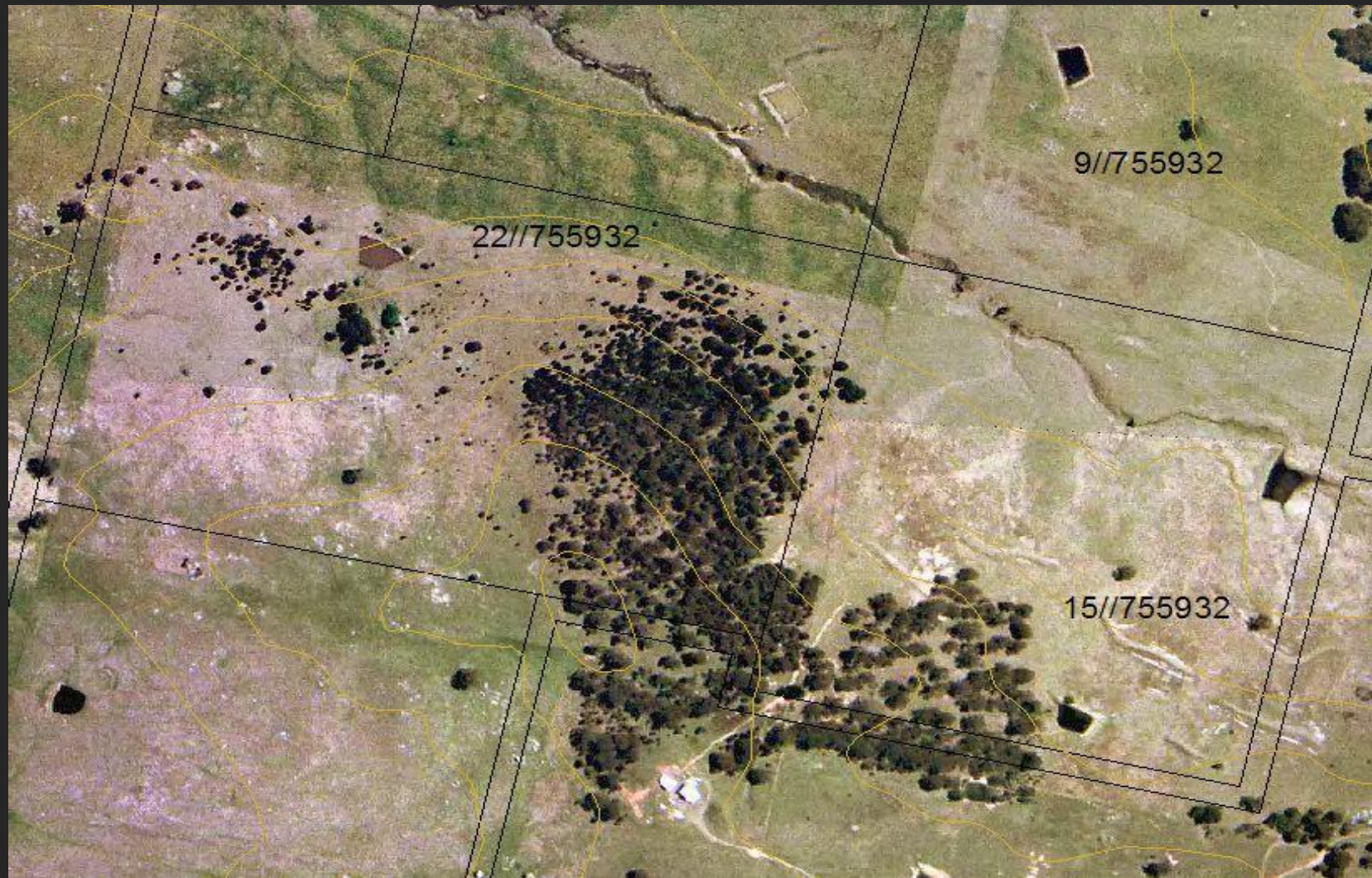
THE CREEK 2.0

In the beginning.



The other extreme





22//755932

9//755932

15//755932



The next series are of the upper catchment





The Swales



2nd Swale



Having identified the factors ,we now move to the creek itself.



No reduction in exit speed at peak.



The Grave

named for oblivious reasons.











The Sticks. This is higher up the catchment and designed to reduce flow speed at a pinch point.

























Water clarity in Swales.



Water clarity at boundary after storm



Remember the photos from the start?







TOO much grass!



Swales and snow melt.

